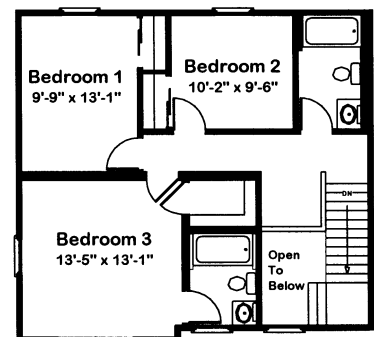
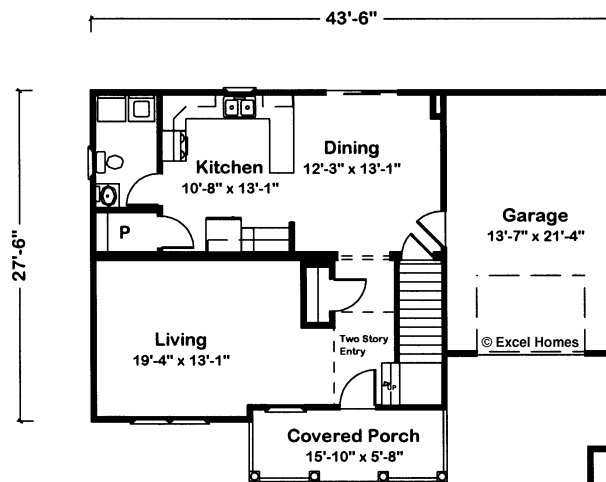


7373 Ultima T-10 A



Renderings are for illustration purposes only and may vary in precise detail from plans and specifications.

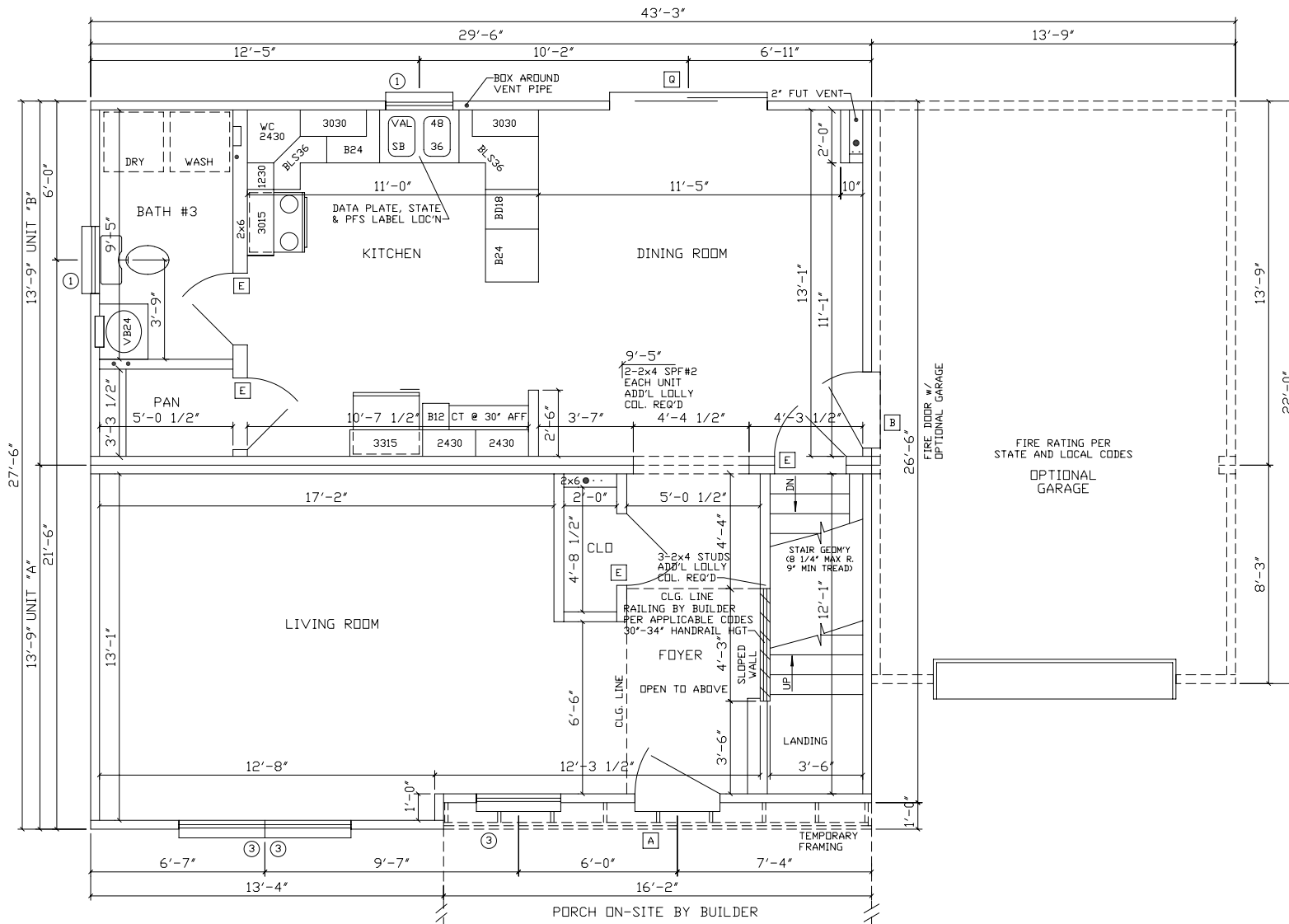
The quaintness of Ultima T-10 A. A sizable covered front porch for quiet reflection. Nice-sized living and dining rooms enhance today's lifestyles. Upstairs, the three bedrooms are served by two full baths.



758 Main Level
 700 Second Level
 1458 Total Finished Sq. Ft.
 (All footages approximate)

ULTIMA T-10A TWO STORY

WINDOWS	EXT. DOORS	INT. DOORS	KIT. CABS.
(9) - #3	(1) - STD. 'A'	(10) - PASSAGE	17.25 FT - WALL CAB.
(2) - #1	(1) - STD. 'B'	(2) - SLIDER	17.5 FT - BASE CAB.
(1) - #3 S.G.	(1) - VINYL SLIDER		3 FT - DESKTOP AREA



SN- /QN-?/X

NOTES:

1. 2x4 SPF#2 EXT WALLS @ 16" O.C./2x4 MARR WALLS
2. 8'-0" CLG HT.
3. 2x10 SPF#2 FLOOR JOISTS @ 16" O.C.
4. 7-D SINGLE HUNG WINDOWS (#1=24210, #2=2842, #3=3048, #4=2852, #11=2558C)
5. CEILING DRYWALL WILL BE OMITTED FOR ALL ON-SITE PLUMBING CONNECTIONS

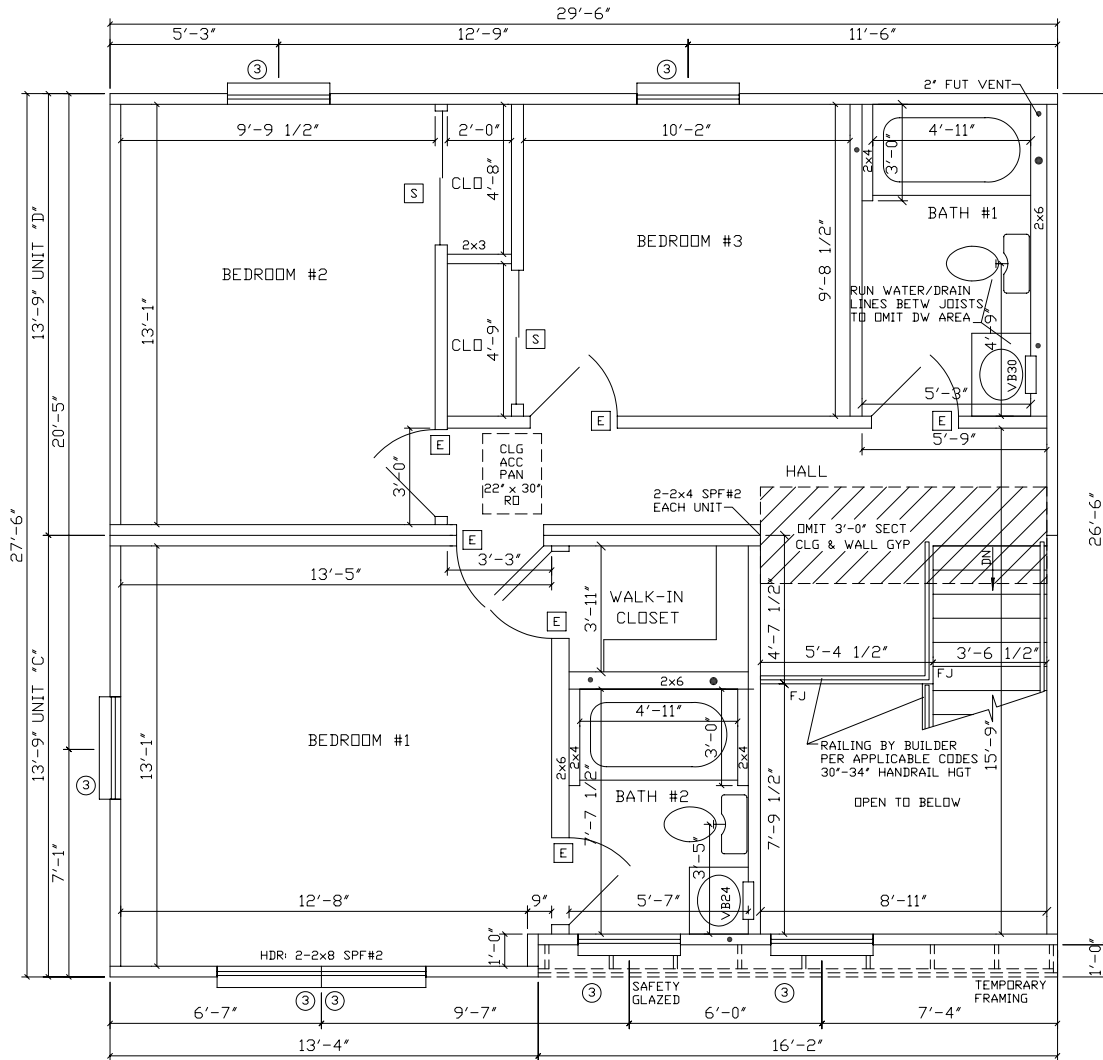


R.R.#2 BOX 683
 LIVERPOOL, PA 17045
 (717) 444-3395
 FAX (717) 444-7577
 WWW.EXCELHOMES.COM

27⁶29⁶ ULTIMA T-10A
 1ST STORY

DRAWN BY:	CHECKED BY:	DATE:	SCALE: 1/4"=1'-0"
REVISIONS:			DISK NO: ULT-T10A

01/14/02 08:24



NOTES:

1. 2x4 SPF#2 EXT WALLS @ 16" O.C./2x4 MARR WALLS
2. 8'-0" CLG HT.
3. 2x10 SPF#2 FLOOR JOISTS @ 16" O.C.
4. ROOF SYSTEM TO BE 24" O.C.
5. 7-D SINGLE HUNG WINDOWS (#1=24210, #2=2842, #3=3048, #4=2852, #11=2558C)
6. CLG BEAM OVER HALL TO BE: 2-1 1/2"x9 1/4"x13'-0" M.L.



R.R.#2 BOX 683
LIVERPOOL, PA 17045

(717) 444-3395

FAX (717) 444-7577

27⁶29⁶ ULTIMA T-10A
2ND STORY

DRAWN BY:	CHECKED BY:	DATE:	SCALE: 1/4"=1'-0"
REVISIONS:			DISK NO: ULT-T10A