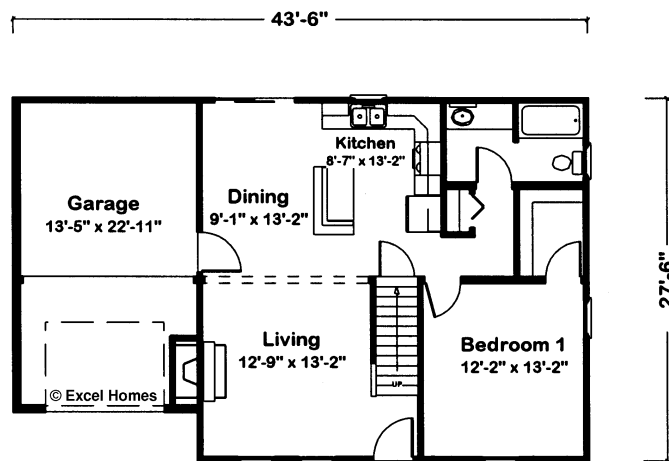


7371 Ultima C21A

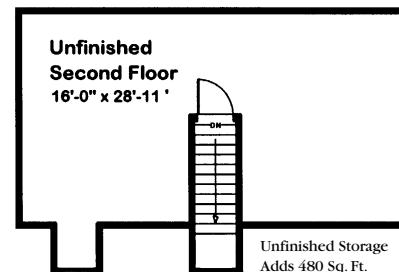


Renderings are for illustration purposes only and may vary in precise detail from plans and specifications.

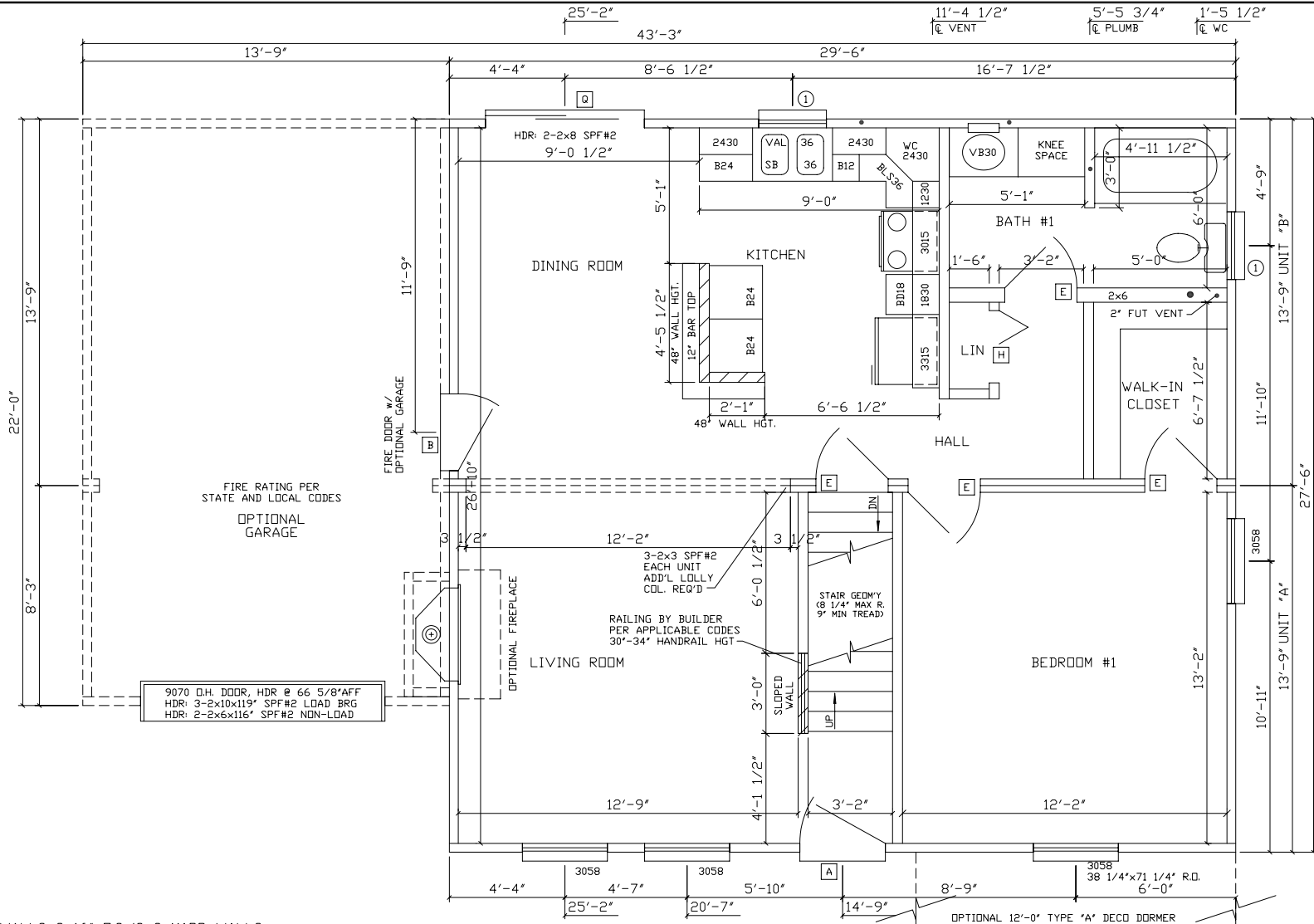
Aspects of Ultima C21 A. This compact cape design packs a surprising level of amenities. The fireplace is visible to the open living room/dining/kitchen area. An island kitchen features a snack bar for meals on the go. The unfinished second floor could be finished at any time to include one or two more bedrooms.



792 Finished Sq. Ft.
(All footages approximate)



ULTIMA C-21A CAPE			
WINDOWS	EXT. DOORS	INT. DOORS	KIT. CAB.
(4) - 3058	(1) - STD. 'A'	(4) - PASSAGE	13.75 FT WALL CAB.
(2) - #1	(1) - STD. 'B'	(1) - SGL BIFOLD	15.5 FT BASE CAB.
	(1) - STD SLIDER		8 FT HALF WALL w/12" BARTOP



- NOTES:
- 1.2x4 SPF#2 EXT WALLS @ 16" O.C./2x3 MARR WALLS
 - 2.8'-0" CLG HT.
 - 3.2x10 SPF#2 FLOOR JOISTS @ 16" O.C.
 - 4.ROOF SYSTEM TO BE 16" O.C.
 - 5.7-D SINGLE HUNG WINDOWS (#1=24210, #2=2842, #3=3048, #4=2852, #11=2558C)
 - 6.CLG BEAM OVER LR/DR TO BE: 4-1 1/2"x9 1/4"x20'-10" M.L./2-1 1/2"x9 1/4"x23'-6" M.L.

excel
Homes
 FROM THE INSIDE

R.R.#2 BOX 683
 LIVERPOOL, PA 17045
 (717) 444-3395
 FAX (717) 444-7577
 WWW.EXCELHOMES.COM

27⁶29⁶ ULTIMA C-21 CAPE

DRAWN BY:	CHECKED BY:	DATE:	SCALE: 1/4"=1'-0"
REVISIONS: REV. STD 10-29-01			DISK NO:
			ULTC21CA

01/14/02 08:25

DO NOT SCALE THIS DRAWING, PHOTOCOPIES ARE NOT TO SCALE.