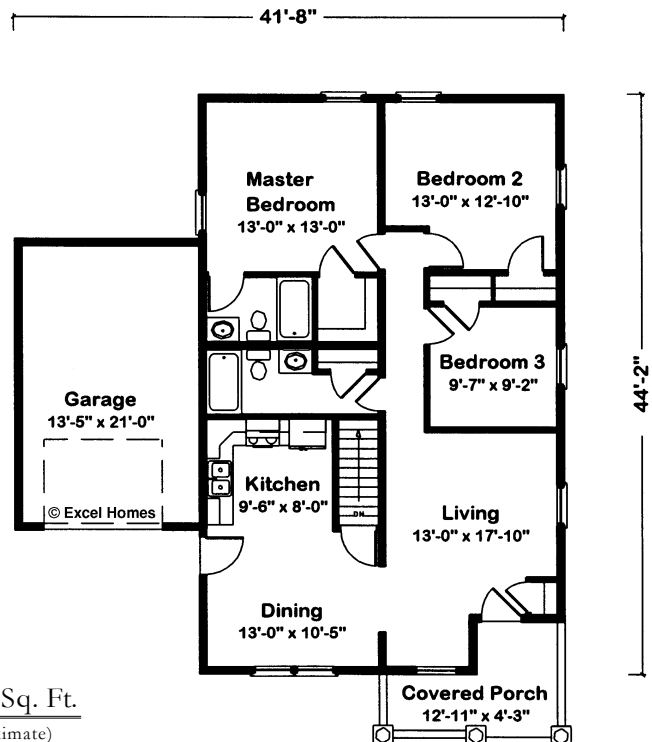


7343 Liberty II A



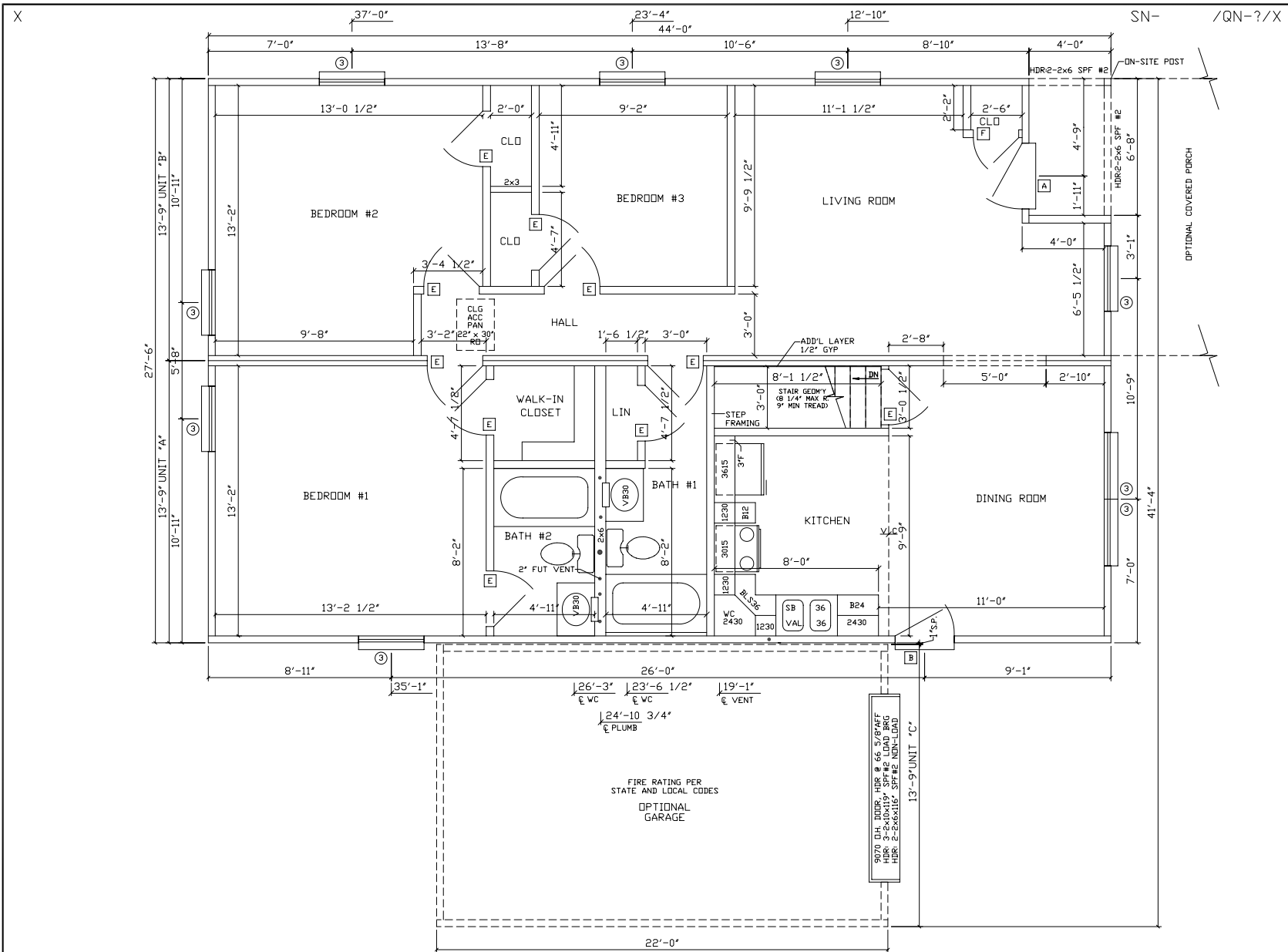
Renderings are for illustration purposes only and may vary in precise detail from plans and specifications.

The charmed Liberty II A. A columned porch to coax outsiders in. Free-flowing entertaining areas toward the front facilitate formal and informal gatherings. Two full baths serve the rear bedroom wing, offering a good night's sleep.



1148 Finished Sq. Ft.
(All footages approximate)

LIBERTY 2A			
WINDOWS	EXT. DOORS	INT. DOORS	KIT. CABIN.
(9) - #3	(1) - STD. 'A'	(11) - PASSAGE	12.5 FT - WALL CAB.
	(1) - STD. 'B'		10.00 FT - BASE CAB.



- NOTES:
- 2x4 SPF #2 EXT WALLS @ 16" O.C./2x3 MARR WALLS
 - 8'-0" CLG HT.
 - 2x10 SPF #2 FLOOR JOISTS @ 16" O.C. w/ JOIST HANGERS
 - ROOF SYSTEM TO BE 24" O.C.
 - 7-D SINGLE HUNG WINDOWS (#1=24210, #2=2842, #3=3048, #4=2852, #11=2559C)

excel
Homes
 FROM THE INSIDE

R.R.#2 BOX 683
 LIVERPOOL, PA 17045
 (717) 444-3395
 FAX (717) 444-7577
 WWW.EXCELHOMES.COM

27644 LIBERTY 2A

DRAWN BY:	CHECKED BY:	DATE:	SCALE: 1/4"=1'-0"
REVISIONS: REV. STD 10-31-01			DISK NO: LIB2A
			01/14/02 08:22